



JIM NED CISD

"A" RATED DISTRICT

BOND ELECTION 2020

FOR MORE INFORMATION



EARLY VOTING: OCTOBER 13-30 | ELECTION DAY: NOVEMBER 3

WHAT'S PROPOSED

PROPOSITION A



NEW SCHOOL

- New Intermediate school for grades 4th, 5th, & 6th, with a gym and playground



EXPAND

Middle School

- 1,316 SF Middle School kitchen expansion
- 5,503 SF Cafeteria addition

High School

- 6,837 SF High School north academic addition (3 classrooms & 2 science labs)
- 2,300 SF High School locker room expansion & circulation improvements



CAREER TECHNOLOGY FACILITY

- New facility for CTE (Career & Technical Education) programs



IMPROVEMENTS

Middle School

- Renovation of existing science labs
- Conversion of old home economics classrooms into two new classrooms

High School

- New entrance facilities
- Rehab of PA & bell system
- Campus circulation, paving expansion, & additional parking

PROPOSITION B



NEW PERFORMING ARTS AUDITORIUM

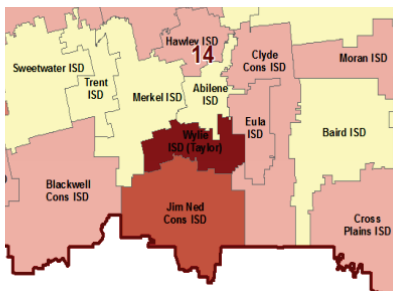
- New 18,000 SF Facility
- Seating capacity of 850

PROP A: \$25,882,107

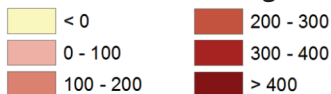
PROP B: \$7,808,967

PROP A & PROP B TOTAL: \$33,691,074

OUR DISTRICT IS GROWING



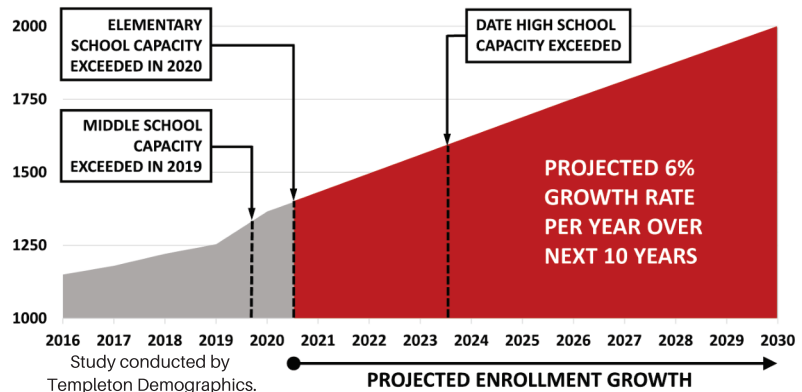
5 Yr Enrollment Change



Study conducted by Templeton Demographics.

ENROLLMENT & PROJECTION

... FACILITY CAPACITY WITH BOND IMPROVEMENTS ...



24.4% GROWTH RATE & 282 STUDENTS GAINED IN LAST 5 YEARS

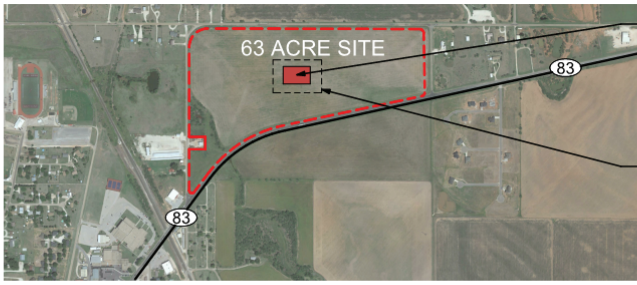
FOR MORE INFORMATION VISIT WWW.JIMNED.ESC14.NET/PAGE/BOND%20INFORMATION

PROPOSED PROJECTS

98,000 SQUARE FEET OF NEW CONSTRUCTION

706 NEW CLASSROOM SEATS THROUGHOUT THE DISTRICT

IMPROVED CAMPUS CIRCULATION WITH NEW ENTRANCES AND PARKING



NEW INTERMEDIATE SCHOOL

New 54,000 SF Intermediate School to house grades 4, 5, & 6. Located northeast of existing High School off Hwy 83.
 Actual campus to be approximately 5 acres
 Drainage and traffic concerns to be addressed during design phase



NEW CAREER TECHNOLOGY FACILITY

New 10,000 SF CTE facility to include a variety of technical skills including welding and coding

HIGH SCHOOL LOCKER ROOM EXPANSION

2,300 SF expansion to locker rooms at the High School and improved interior circulation of existing locker room facilities

HIGH SCHOOL ACADEMIC EXPANSION

6,837 SF addition to the north side of the High School that would include 3 classrooms and 2 science classrooms / lab facilities

NEW PARKING

Additional parking

HIGH SCHOOL ENTRANCE

Exterior facade improvements and new entrance

PAVING & CIRCULATION

Expanded entrance off Hwy 83, additional parking, and landscaping of existing entrance

PAVING & CIRCULATION

Additional parking and egress to Pecos Trail

NEW PERFORMING ARTS AUDITORIUM

New 18,000 SF Auditorium with a seating capacity of 850. Will include a lobby, stage rigging, set prep areas, etc.

PA & Bell System

Rehab of PA & Bell Systems

KITCHEN & CAFETERIA

1,316 SF expansion of existing kitchen serving Middle School and High School. 5,503 SF Middle School cafeteria addition

CONVERSION & RENOVATION

Conversion of old Home Economics classroom into 2 new classrooms and a renovation of the existing science lab at the Middle School

APPRAISED HOME VALUE	MONTHLY IMPACT		ANNUAL IMPACT	
	PROPOSITION A	PROPOSITION A & B	PROPOSITION A	PROPOSITION A & B
\$100,000	\$11.44	\$14.92	\$137.32	\$179.02
\$150,000	\$19.76	\$25.77	\$237.18	\$309.22
\$250,000	\$36.41	\$47.47	\$436.91	\$569.62

ESTIMATED TAX IMPACT

The monthly tax increase for the combined proposition A & B is approximately \$30.74 a month and \$368.89 annually for the average taxable home value of \$172,913.

65+ **NO TAX IMPACT ON HOMESTEAD**
 for residents age 65 & older

MAINTAINED
 "additional Homestead Exemption"

FOR MORE INFORMATION VISIT WWW.JIMNED.ESC14.NET/PAGE/BOND%20INFORMATION