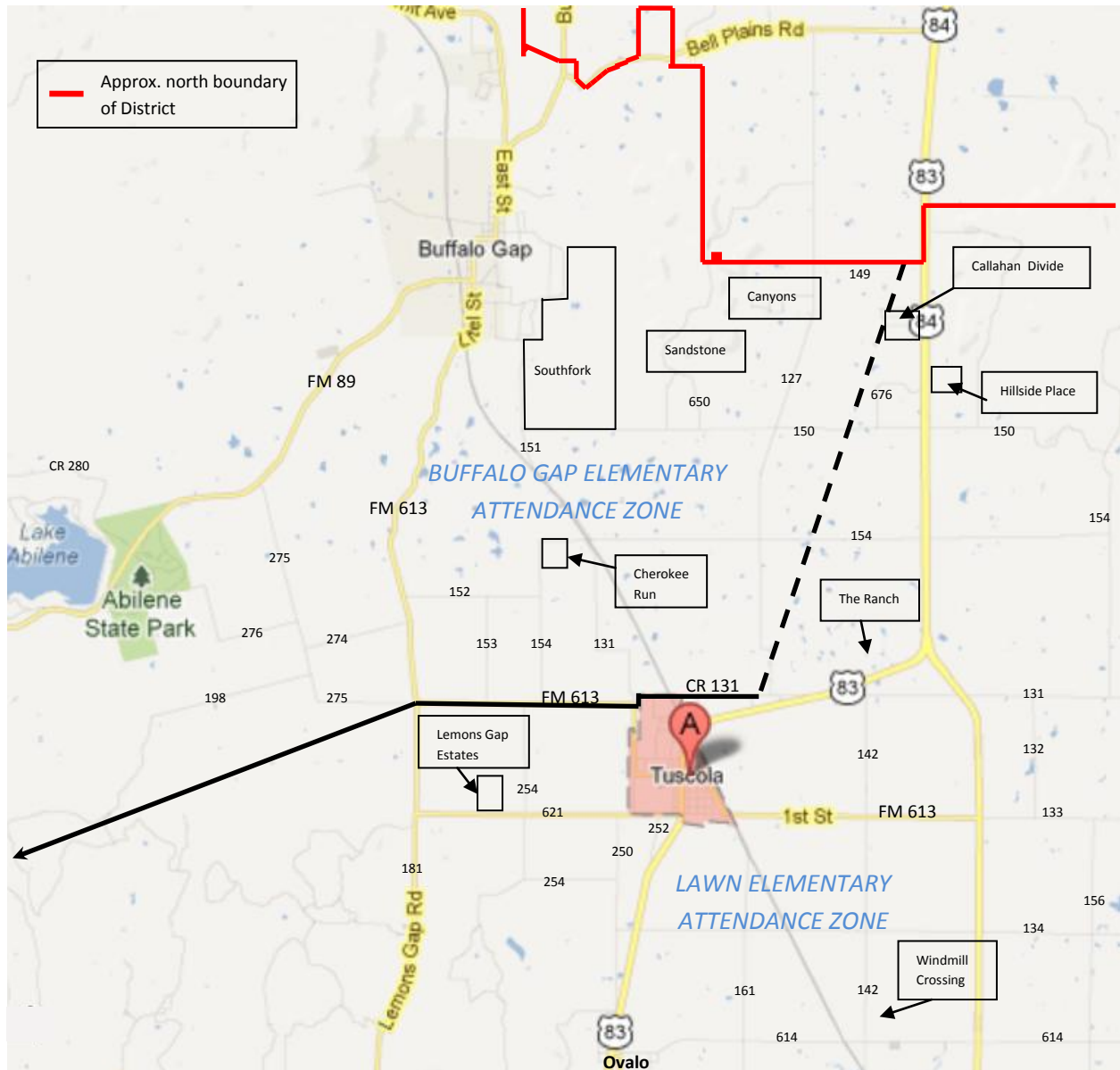


JIM NED CISD
ELEMENTARY ATTENDANCE ZONES
 Adopted by Board of Trustees – April 10, 2017



The black line represents the attendance boundary line for the elementary schools.

The boundary line shall begin at the school district’s North boundary at the point just North of where CR 149 intersects with Hwy 83/84. The boundary line shall follow the transmission line (dashed line) to the point where it crosses CR 131 (by Home Place Restaurant). Line will turn West on CR 131 to FM 613. *[All homes on either side of CR 131 will be in the Lawn Attendance Zone. This includes any homes on any road that intersects this section of CR 131.]*

The boundary line will then continue West down the *middle* of FM 613 to Lemon’s Gap Road. *[Homes on the north side of FM 613 will be in the Buffalo Gap attendance zone. Homes on the south side of FM 613 will be in the Lawn attendance zone.]* At this point the line will be along a straight line that extends WSW to the midpoint of the school district’s West boundary.

In case the boundary line runs through any current or future housing development, the entire development will be considered to be in the attendance zone with the greatest number of lots.

This boundary line will become effective at the start of the 2017-18 school year.

Students currently enrolled at the Buffalo Gap campus affected by the new attendance line will have a one-time option prior to the 2017-2018 school year to select which campus they attend.

New students enrolling will be grandfathered if they are attending concurrently with older sibling(s) that are currently enrolled at the Buffalo Gap Campus. New students without a sibling concurrently enrolled at Buffalo Gap will abide by the new attendance boundary beginning with the 2017-2018 school year.

.....